



CARA AI

for Quality Management

CARA AI for Quality is a native intelligence layer within the CARA Life Sciences Platform, designed to manage unstructured Quality Management System (QMS) documentation across the quality lifecycle. Embedded directly into the platform's core architecture, CARA AI understands technical and regulatory intent, delivering built-in traceability, compliance alignment, and cross-domain awareness across Quality, Regulatory, and Safety.

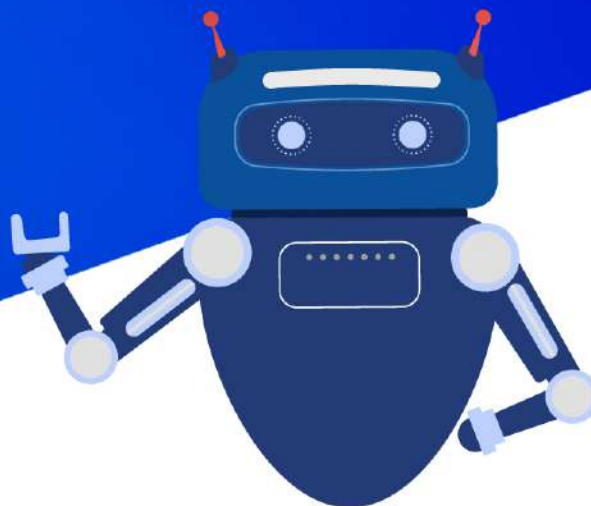
This enables Quality organisations to move from reactive firefighting to predictive oversight, turning documentation into a strategic asset.



Operational Result

Delivering a 50–80% reduction in time required to draft SOPs, CAPAs, and risk assessments.

How CARA AI reduces manual effort while strengthening Quality oversight



Native Semantic Understanding

Retrieves Quality content based on meaning and industry-specific intent, not keywords.

Automated Classification & Structuring

Eliminates manual sorting by automatically classifying and organising QMS documents.

Document Linking & Relationship Mapping

Connects SOPs, Work Instructions, forms, and records to maintain lifecycle visibility.

Operational Result



Reduced manual handling, fewer inconsistencies, and continuous visibility across the QMS.

Unified Quality Environment

Identifies downstream impacts across Quality, Regulatory, and Safety within a single platform.

Insight Extraction from Unstructured Content

Surfaces trends and emerging risks from deviations, complaints, and Quality records.

Controlled Vocabulary Enforcement

Applies standardised glossaries, including MedDRA, ICH, and EMA terminology, to ensure consistent Quality language.

Traceability & Compliance Alignment

Maintains audit-ready documentation aligned with evolving internal and external regulations.

Applied AI across core Quality workflows

Compare: Intent and Impact Alignment

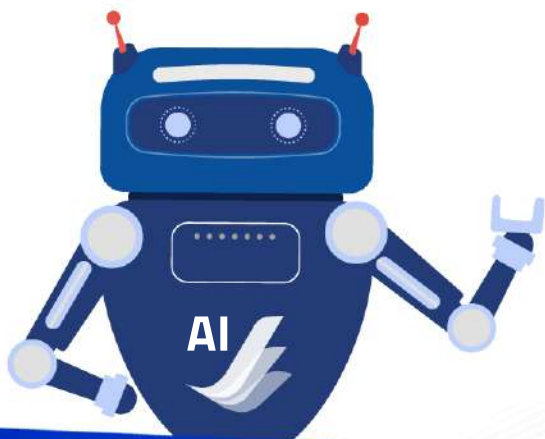
- Explains changes in intent between global and local policies
- Detects conflicts between updated SOPs and existing documentation
- Identifies impacted records and training to accelerate change control

Result: Faster, more controlled change management with fewer downstream surprises.

Translate: Technical Localisation

- Localises SOPs while preserving technical meaning and regulatory context
- Supports real-time translation during multilingual inspections

Result: Consistent Quality execution across regions without rework.



Summarise: Operational and Management Insights

- Condenses audit reports into key findings and CAPAs for management review
- Summarises trends across deviations and CAPAs to support Management Review
- Extracts “what changed” highlights to support training updates

Result: Clear, decision-ready insights without manual synthesis.

Generate: Document Automation

- Produces first drafts of SOPs, CAPAs, and risk assessments
- Drafts Health Authority responses using related Quality documentation

Result: Faster document creation with built-in consistency and traceability.

QMS Process Optimisation: Predictive Intelligence

- Identifies emerging risks by analysing deviations and complaints
- Automatically assembles evidence packs to accelerate audit preparation

Result: Proactive risk management and inspection readiness by design.

Ready to see how native AI transforms Quality management?

Discover how CARA AI supports predictive oversight, built-in compliance, and cross-domain intelligence across the Quality lifecycle.

[REQUEST A DEMONSTRATION](#)

There's a better way, and it starts with CARA