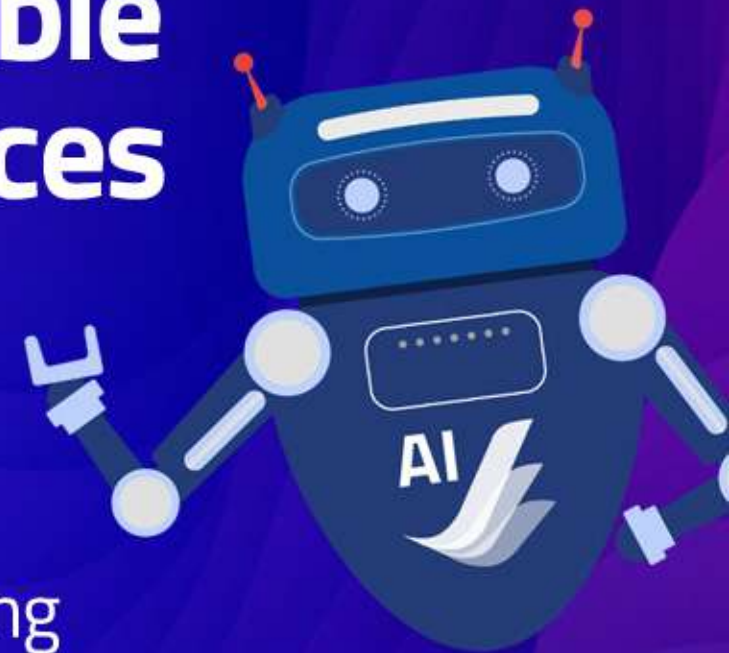


8

Reasons Why Generic AI Systems are Not Suitable for Life Sciences Companies



Unlike some other industries, the risks of using generic AI are much higher in Life Sciences due to stringent regulations and rules around data and information processing.

See how you can avoid the common pitfalls of choosing generic AI and what you should require instead



1

Avoid Limited or Siloed AI Capabilities

Many AI solutions offer only spot solutions for isolated tasks. They are not comprehensive enough to deliver large-scale impact, significant cost reductions, or measurable efficiency gains, leaving companies dependent on manual processes for critical decision-making.

Avoid this by choosing a platform which enables AI for any task processing your data or content.



2

Avoid Insufficient Data Security

Generic AI does not follow the per-user / per-document security that you need to keep your data secure - potentially allowing AI to disclose sensitive information, putting you at risk of data misuse and non-compliance.

A platform that respects native access controls and security policies reduces this risk.



3 Ensure full Explainability & Auditability

Regulatory requirements require complete traceability of inputs, processing and outputs. Emerging regulations also require explainability of how you arrived at certain data output. Off-the-shelf AI tools typically have limited logging and tracking capabilities, creating gaps in compliance and increasing the risk of penalties or failed inspections.

A platform which embeds AI with your data and content, and fully audits and provides the explainability, will keep you compliant.



4 Many platforms impose a specific LLM and feature set

Many platforms lock you into a single LLM and limited functionality. This restricts your ability to use LLMs which might be better fit for purpose, or with which you have corporate contracts, and limits the pace of innovation and range of use of the AI to the platform vendor's pace of updates.

A platform that allows you to choose your LLM(s) gives you the possibility to extend capabilities and leverage the latest AI innovations that will bring significant operational improvements.



5 Avoid Low-Quality Responses from poor Prompts

Without advanced guidance on crafting effective prompts, generic AI outputs can be inconsistent, inaccurate, and variable in quality. This leads to additional review work, potential errors, and reduced confidence in AI-assisted decision-making.

The ability to save your own pre-programmed prompts ensures consistent and high-quality output.



6 Non-Compliance with Templates, SOPs, and Guidelines

Generic AI platforms do not automatically follow internal document / style templates, your SOPs, or regulatory guidelines. This creates risk, additional manual work, and potential compliance issues when generating documents, submissions, or reports critical to life sciences operations.

AI which can generate output in a structured way reduces effort and significantly increases benefits.



7

No Wider Contextual Understanding

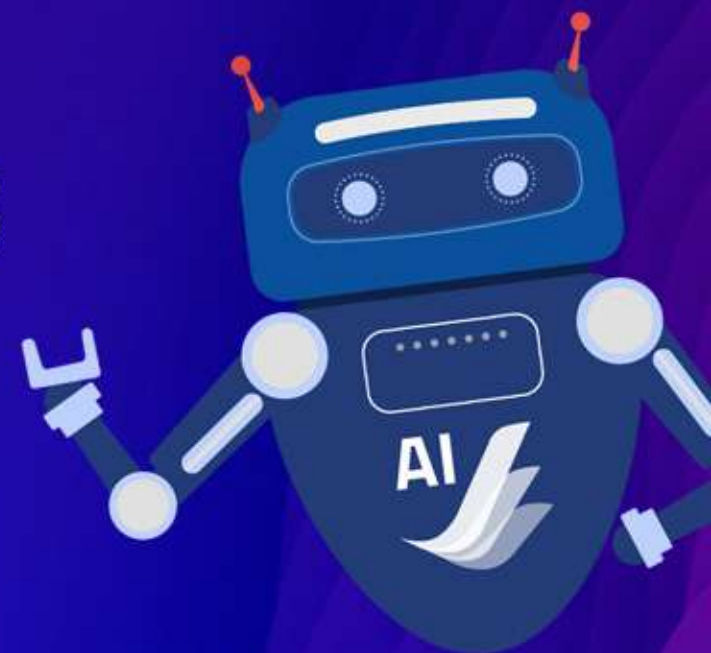
AI tools will operate with whatever you upload to them - resulting in your trying to achieve a full answer based on an incomplete / insufficient data set and context.

A platform that can use all available data as contextual intelligence enables more accurate insights, stronger decision support, and true enterprise-wide value for your outputs.



8

Bolt-on Systems Lack the Right Architecture



Most AI tools are add-ons, designed for general use rather than complex life sciences processes. Without the correct underlying architecture, they struggle to integrate with platforms to provide automations on workflows, data models and analysis, limiting automations and preventing end-to-end process efficiency.

AI built into a platform can significantly improve automations and therefore reduce costs.



Our new weekly blog series will address each of those points and give you tips on how you can see value in your AI investment.

To learn more about CARA AI visit our website

www.caralifesciences.generiscorp.com/cara-ai-life-sciences